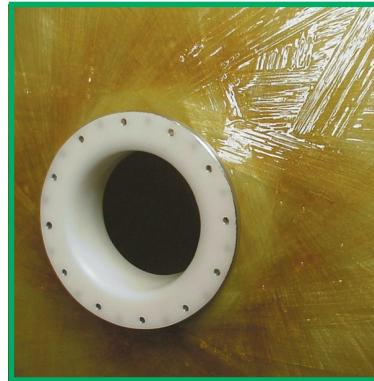


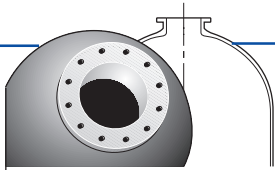
THERMAL PRESSURE VESSELS (TPV)

6" TOP - 6" BOTTOM



STRUCTURAL
TECHNICAL DATA & DRAWINGS

CD_TP1V1_0900



THERMAL PRESSURE VESSELS (TPV)

STRUCTURAL

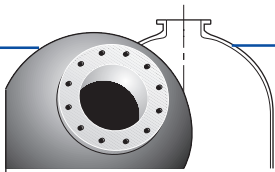
TECHNICAL DATA



This pressure vessel is intended for use in water treatment installations.
Not suitable for pneumatic applications.

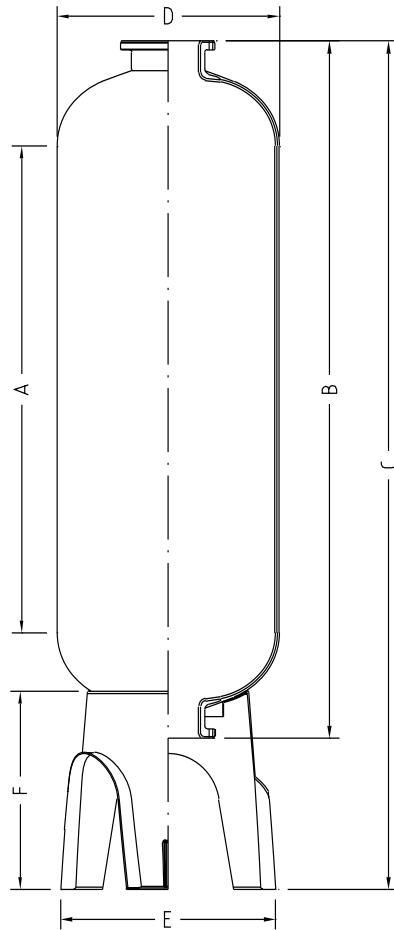
FLANGE OPENING:	6" (150 mm)
OPERATING PRESSURE:	MIN 0 BAR - MAX 10 BAR
OPERATING TEMPERATURE:	MIN 1°C - MAX 80°C
MINIMUM FATIGUE TESTING:	250.000 CYCLES BETWEEN 0 - 10 BAR
STANDARD COLOUR:	NATURAL VESSEL, BLACK BASE
OTHER POSSIBLE COLOURS:	RAL-COLOUR STANDARDS
ACCESSORIES:	SEE ACCESSORIES CATALOGUE
DISTRIBUTION SYSTEMS:	SEE DISTRIBUTION SYSTEMS CATALOGUE
APPROVAL:	T.Ü.V.-APPROVED

CD_TP2V2_0900



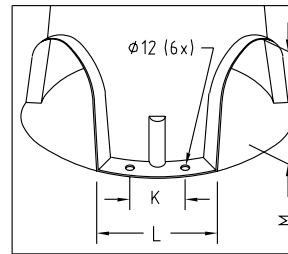
THERMAL PRESSURE VESSELS (TPV)

6" TOP - 6" BOTTOM

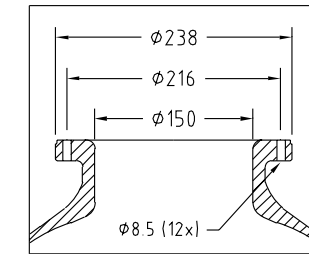


CD-TP-I-283

DETAIL BASE



DETAIL 6" FLANGE



External diameter
Volume vessel
Volume dome
Cylindrical height
Height vessel
Total height min - max
Outside diameter base
Height base
Maximum base load
Bolt distance base
Width base leg
Free height base
Weight empty vessel

TYPE	D (mm)	(l)	(l)	A (mm)	B (mm)	C (mm)	E (mm)	F (mm)	(kg)	K (mm)	L (mm)	M (mm)	(kg)
C-HW1468-F7	Ø369	140	7,3	1369	1736	2064-2084	Ø488	468	405	110	173	320	33
C-HW1668-F7	Ø406	172	10,1	1356	1748	2088-2108	Ø488	468	405	110	173	320	42
C-HW1868-F7	Ø469	250	14,6	1344	1780	2105-2135	Ø545	475	710	110	240	305	45
C-HW2166-F7	Ø552	310	24,0	1158	1642	2000-2020	Ø545	475	710	110	240	305	48
C-HW2475-F7	Ø610	450	35,0	1320	1866	2210-2230	Ø615	480	995	110	240	305	58
C-HW3078-F7	Ø770	710	67,0	1284	1920	2270-2300	Ø778	518	1590	110	240	325	112
C-HW3678-F7	Ø927	1020	116,0	1272	1975	2310-2350	Ø950	555	2245	110	265	382	143
C-HW4278-F7	Ø1074	1360	176,0	1222	2015	2390-2430	Ø1104	589	2990	110	265	412	176
C-HW4882-F7	Ø1226	1840	273,0	1140	2055	2420-2465	Ø1260	601	4040	150	313	410	250

All with base and single packaging

OPERATING PRESSURE : MIN 0 BAR - MAX 10 BAR
OPERATING TEMPERATURE : MIN 1°C - MAX 80°C